

The logo for the Battle River Watershed Alliance features the words "BATTLE RIVER" in a stylized, serif font. The letters are primarily gold with blue outlines. A thick, blue, wavy line flows beneath the letters, resembling a river or a stylized underline. The background of the entire image is a scenic landscape with a blue sky, white clouds, a body of water, and green vegetation.

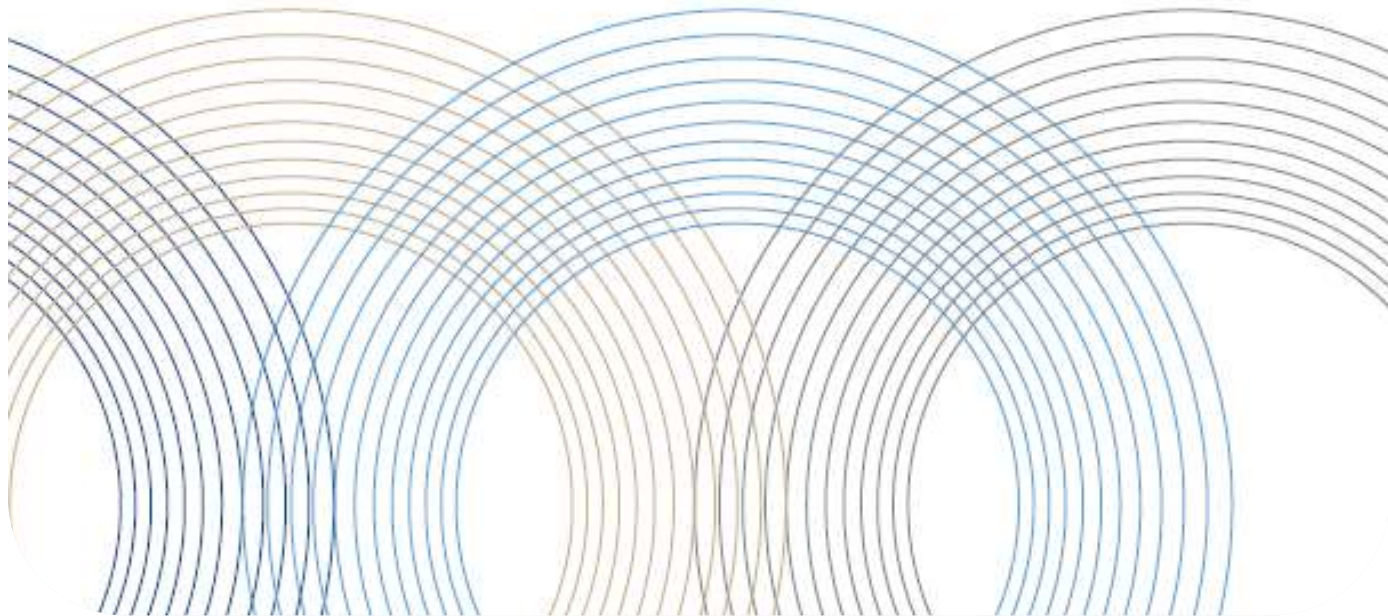
# BATTLE RIVER

WATERSHED ALLIANCE

*This is our battle: the watershed we all share,  
and the fight to maintain a healthy environment,  
vibrant communities and a stable economy.*

# OUR BATTLE

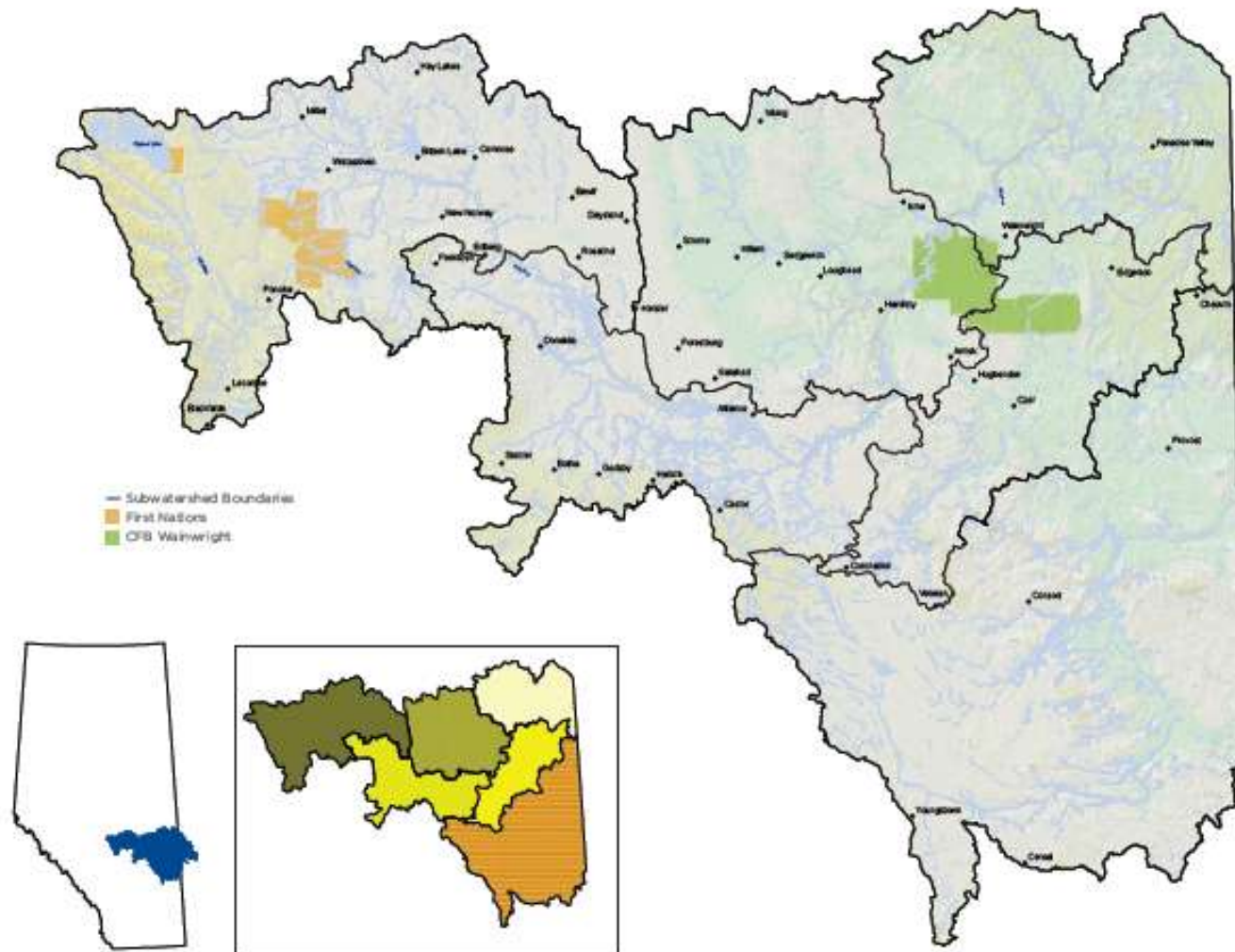
STATE OF THE BATTLE RIVER AND  
SOUNDING CREEK WATERSHEDS REPORT 2011





## THE BATTLE RIVER AND SOUNDING CREEK WATERSHEDS

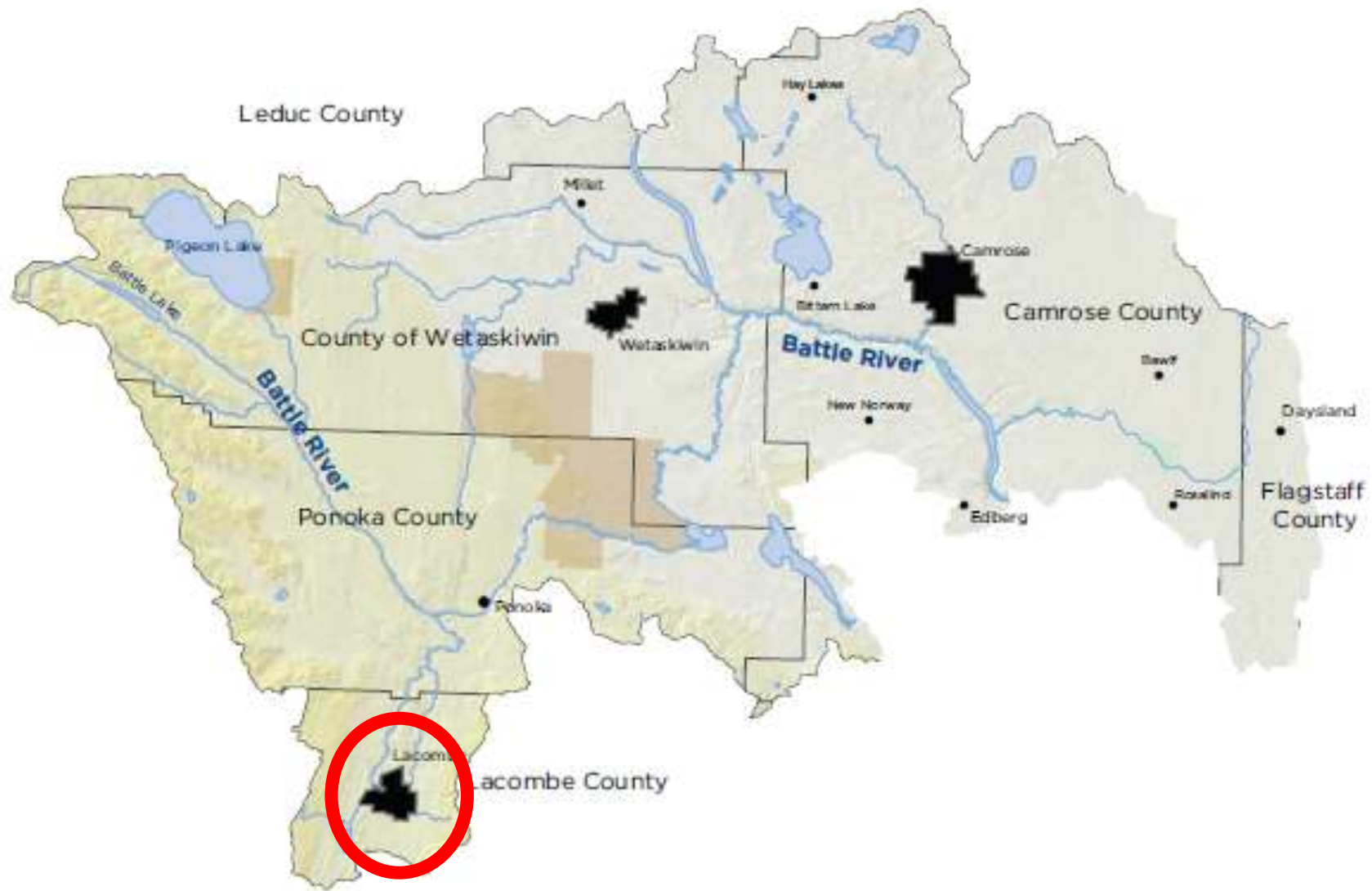
The Battle River Watershed Alliance planning boundaries encompass the Alberta portions of the Battle River and Sounding Creek watersheds. The Battle River watershed is made up of five subwatersheds: Bigstone, Iron Creek, Paintearth, Blackfoot and Ribstone. The Sounding Creek watershed is considered as a single unit. Note: The background colours on the large map represent terrain relief.



# BIGSTONE

SUBWATERSHED

---

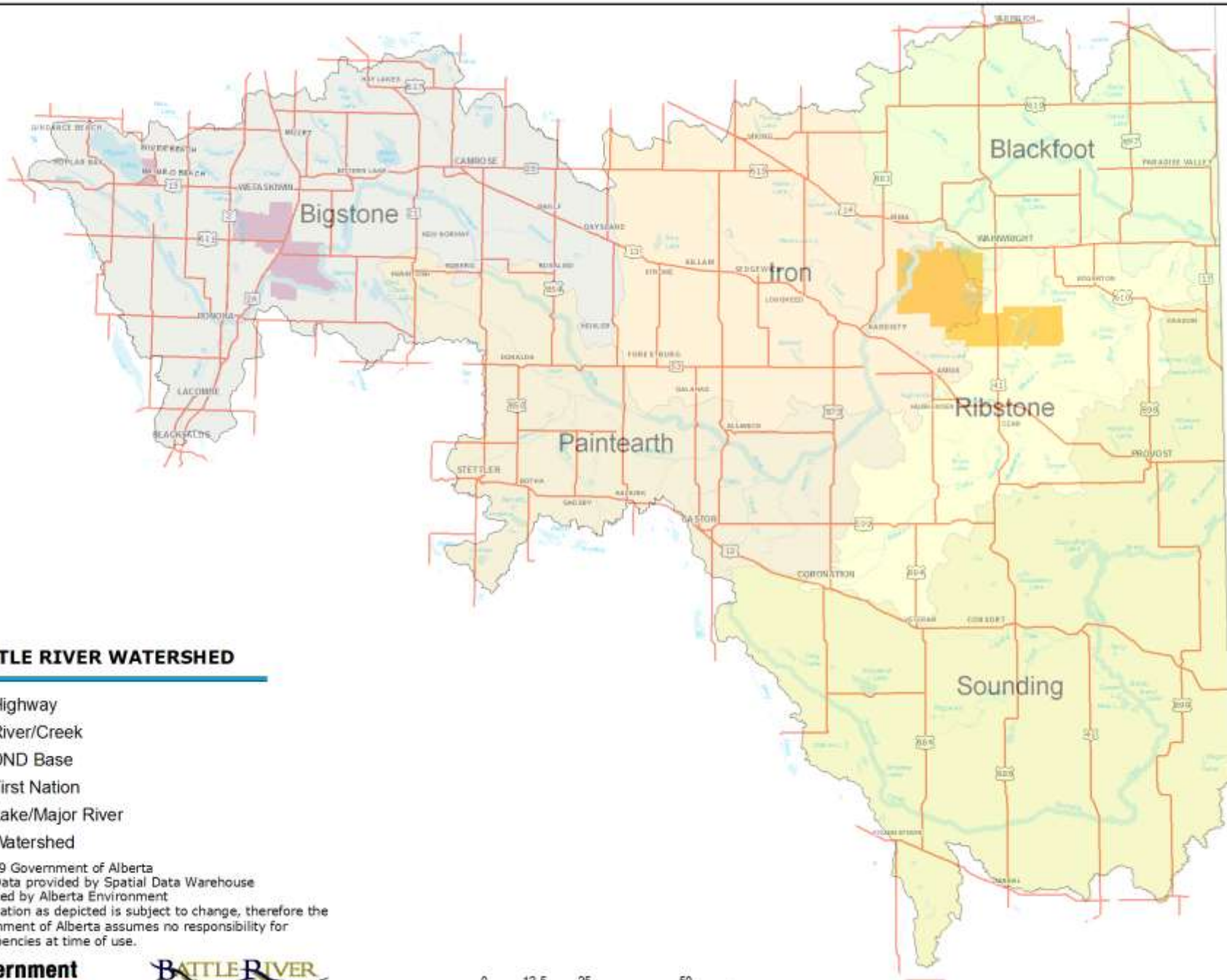


# State of the Watershed Report



Report available in limited print copy, online at [www.battleriverwatershed.ca](http://www.battleriverwatershed.ca) and digital

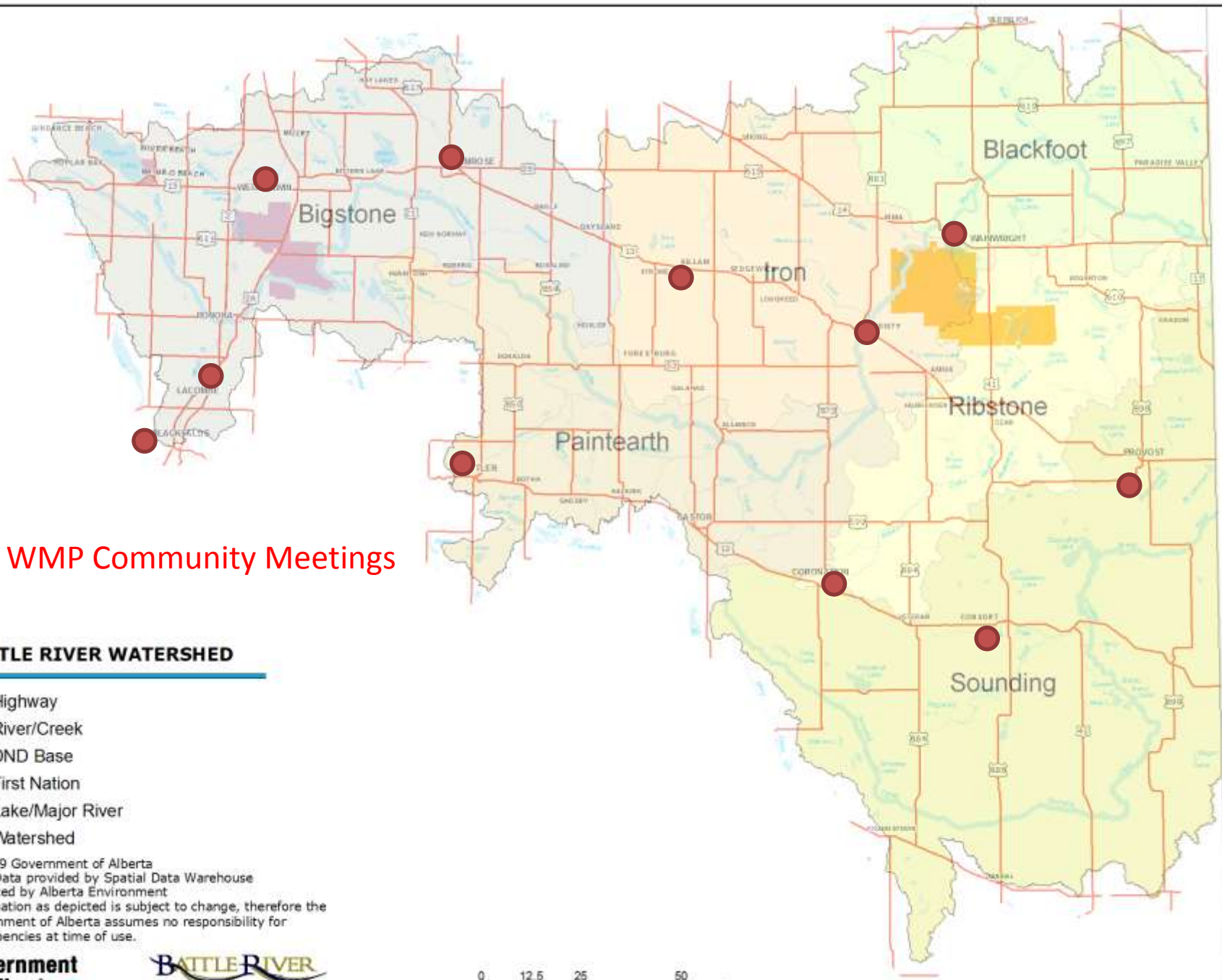




**BATTLE RIVER WATERSHED**

- Highway
- River/Creek
- DND Base
- First Nation
- Lake/Major River
- Watershed

© 2009 Government of Alberta  
 Base Data provided by Spatial Data Warehouse  
 Produced by Alberta Environment  
 Information as depicted is subject to change, therefore the  
 Government of Alberta assumes no responsibility for  
 discrepancies at time of use.

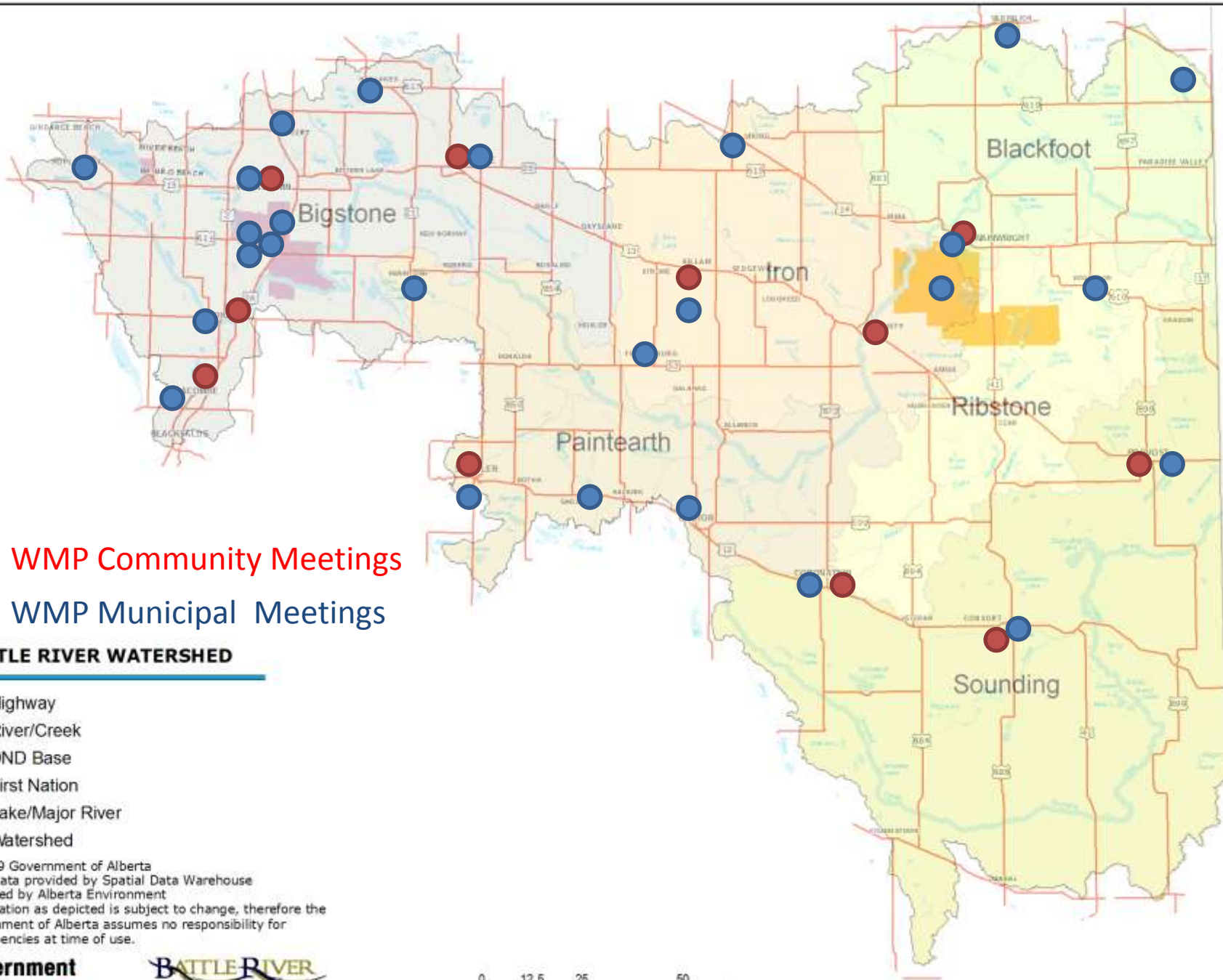


● WMP Community Meetings

**BATTLE RIVER WATERSHED**

- Highway
- River/Creek
- DND Base
- First Nation
- Lake/Major River
- Watershed

© 2009 Government of Alberta  
 Base Data provided by Spatial Data Warehouse  
 Produced by Alberta Environment  
 Information as depicted is subject to change, therefore the  
 Government of Alberta assumes no responsibility for  
 discrepancies at time of use.



© 2009 Government of Alberta  
 Base Data provided by Spatial Data Warehouse  
 Produced by Alberta Environment  
 Information as depicted is subject to change, therefore the  
 Government of Alberta assumes no responsibility for  
 discrepancies at time of use.



# WMP Community Meeting

Your Invited!

**November 1**

---

**LACOMBE**

Lacombe Memorial Centre

1:00 - 4:00 pm

---

**PONOKA**

Kinsmen Community Centre

7:00 - 9:30 pm

