

REACH OUT

Volume 1, Issue 5

A publication of Red Deer River Watershed Alliance

September 2007

Eastern Edition — Drumheller to Saskatchewan

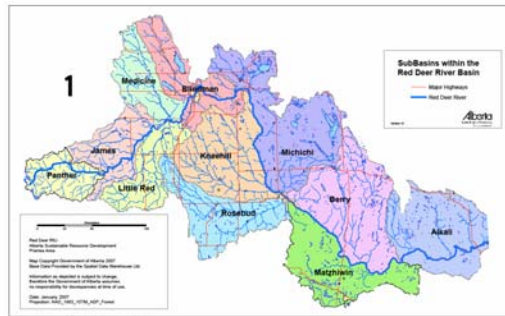
RED DEER RIVER WATERSHED ATLAS

Submitted by Doug Thrussell

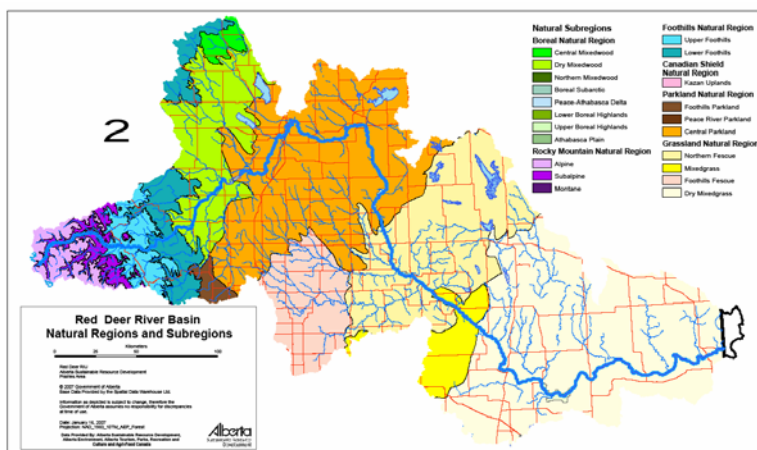
In March 2007, the Red Deer River Watershed Alliance completed a major project – the *Red Deer River Watershed Atlas*. With financial support from Alberta Beef Producers and the Red Deer River Municipal User's Group, the project was initiated in the fall of 2005.

The *Red Deer River Watershed Atlas* is a series of twenty-four maps each one showing different features within the watershed. The features cover subjects like agricultural intensities, oil and gas well densities, river water quality, municipal populations, etc..

Produced by Alberta Sustainable Resource Development and Alberta Environment, the full colour atlas represents a unique data compilation that sets the foundation for the State of Watershed Report. Municipalities that financially support the Alliance with core funding each received a complimentary copy. Additional copies of the atlas can be purchased through the Alliance.



SubBasins within the Red Deer River Watershed: Panther, James, Little Red, Medicine, Blindman, Kneehill, Rosebud, Michichi, Berry, Matzhiwin, and Alkali sub-Basins (Source: RDRWA Watershed Atlas)



Red Deer River Basin Natural Regions and SubRegions including Rocky Mountain, Boreal, Foothills, Parkland and Grassland Natural Regions. (Source: RDRWA Watershed Atlas)

Inside this issue:

| | |
|-----------------------------------------|---|
| Watershed Stewardship Work at the RDRWA | 2 |
| RDRWA hires new Program Coordinator | 3 |
| Kids Corner | 3 |
| View from the Board | 4 |
| Upcoming Events | 4 |

Definition:

“reach” verb

1. to stretch out or put forth; extend; reached out an arm
2. to succeed in getting in contact with or communicating with people

“reach” noun

1. the stretch of water visible between bends in a river or channel
2. range of scope or influence



Watershed Stewardship Work at the RDRWA

In the summer of 2007, the Red Deer River Watershed Alliance started a pilot project to assist Watershed Stewardship Groups. The project, jointly funded by Alberta EcoTrust, involved hiring a Watershed Stewardship Program Coordinator to meet with agencies and Watershed Stewardship Groups over the summer months. Christian Pfeiffer fulfilled the role by researching and collecting information and providing assistance to the stewardship groups.

Christian began the project by meeting with the agencies who currently work with local stewardship groups and he also met with the 12 established stewardship groups in the Red Deer River Watershed. Agencies contacted included the Alberta Stewardship Network, Alberta Conservation Association, Cows and Fish, Alberta Agriculture and Food, and the rural extensions staff currently working with the watershed groups. Christian stated, "These agencies provided valuable information and ideas on how I could get involved with the Watershed Stewardship Groups and what I could do to assist them."

Pfeiffer found that the wide diversity within the Watershed Stewardship Groups allowed him to provide assistance in a variety of ways. Pfeiffer stated, "The assortment of activities I carried out with the stewardship groups included promoting the group at events to increase their membership, research, help with on-the-ground projects, water testing, and looking for new project opportunities."

Pfeiffer provided all stewardship group members with a copy of the Red Deer River Watershed Alliance's Stewardship Kit and gave presentations on the Alliance and stewardship when the opportunity arose.

Success of the pilot project became evident when Pfeiffer encouraged two new stewardship groups to collaborate with the Red Deer River Watershed Alliance: The Waters of Wheatland Committee and Rosebud River Watershed Partnership. Pfeiffer was excited to announce, "I was also able to facilitate the formation of a new stewardship group in the Matzhiwin sub-basin which is located in parts of Newell County."



Watershed Stewardship Coordinator working with local watershed stewardship groups as part of AWQA days.

Photo Credit: AWQA organizers

The Watershed Stewardship Groups indicated a need for more information on grants available to them. To follow up, Pfeiffer conducted research to form a detailed list of 22 grants that could be used by the groups to set up projects, activities and events. The list of stewardship grants is available from the Alliance.

As part of his research, Pfeiffer collected information on Watershed Beneficial Management Practices; composting, low and dual flush toilets and phosphate free detergents. He was able to participate in the Alberta Water Quality Awareness day by completing 30 water tests throughout the Red Deer River Watershed.

In summary Pfeiffer explained, "Throughout the summer I met a variety of groups and individuals, doing excellent work in the stewardship of their watersheds. Their work on educating stakeholders, creating awareness and completing on-the-ground projects will help create physical and positive changes that will maintain our watersheds and improve riparian health. These stewards have been great to work with and through their efforts we have a healthy and sustainable watershed to live in."

RWRDA hires new Program Coordinator

The Red Deer River Watershed Alliance is pleased to welcome Donna Trottier to the team. Donna will be working as our Program Coordinator with a broad range of stakeholders living and working in the Red Deer River watershed.

Donna grew up on a farm near Colonsay, Saskatchewan. She attended the University of Saskatchewan, obtaining, first a Diploma in Agriculture and then a Degree in Agriculture. Donna worked with the Saskatchewan Assessment Management Agency in Regina for 15 years as an agricultural assessor. She was involved in the Crop Inputs world as a Crop Input Agrologist and Crop Consultant with her own crop management planning business.



Donna Trottier with a member of the Chinese delegation that came to Western Canada to learn more about soil conservation practices in Western Canada.

Photo Credit: Red Deer County

In 2002 Donna and her family moved to Red Deer to operate a maintenance and polymer coating business where Donna looked after marketing and promotion of the business. She did a short stint with AFSC, working in the income disaster program. Most recently Donna has been working with Red Deer County as the Conservation Coordinator. She participated in activities with watershed groups, the Environmental Farm Plan program, local landowners, promoting sustainable farming practices. She enjoys collaborating with other stewards on projects such as bioengineering, riparian enhancement and promoting environmental awareness. Her passion is helping stewards to source the information and resources they need to meet their stewardship goals.

Kids Corner: Do you know what a watershed is?

Do you know you live in a watershed?

Actually, we all live in a watershed!

The following experiment will help us better understand what a watershed is.

1. Scrunch up a piece of plain paper, and then smooth it out a little.
2. Take a washable marker and mark all the creases or ridges on the paper.
3. Now use a spray bottle with water to “rain” on the paper.
4. Watch where the water runs -- you’ve just made your own “watershed”, and where the water collects are the rivers, lakes and streams.

Now you have just made your own watershed. A watershed is the entire area of land surrounding a body of water, such as a lake, a river, a stream or a bay.

Everything including the animals, people, roads and buildings make up a watershed. Any time it rains or snows, the water travels through the watershed and eventually finds its way into the body of water.

HELP! I really need a name—send your ideas to info@rdrwa.ca



cluding the animals, people, roads and buildings make up a watershed. Any time it rains or snows, the water travels through the watershed and eventually finds its way into the body of water.

View from the Board ...

In July, 2007 the RDRWA held its Annual General Meeting. With only one outgoing Board member, Vince Herron with Alberta Fish & Game, an important outcome of the meeting was the election the Board of Directors. The RDRWA Board of Directors consists of the following:

| Sector | Member—Representing |
|------------------------------------|------------------------------------------------------------------------------------------------------------------------------------|
| Agriculture/ Business/Industry: | Tom Daniels -Sundre Forest Products Doug Sawyer—Alberta Beef Producers Jack Swainson—Alberta Conservation Tillage Society |
| Environment/ Stewardship: | Dale Christian—Butte Action Committee Jim Martin—Dickson Fish & Game Club Tracy Scott—Ducks Unlimited |
| First Nations: | Philip Simpson—Samson Cree Nation Vacant |
| Provincial,/Federal /Academia: | Doug Thrussel—Alberta Environment Jamie Wuite - Alberta Agriculture and Food Dr. Abimbola Abiola—Olds College |
| Municipal Government: | Paul Goranson—City of Red Deer Earl Graham (Chair) - Clearwater County Dug Major (Vice Chair) - Special Areas |
| Individuals: | Bill Shaw—Self Richard Bennett—Self |



Sitting from L to R: Jack Swainson, Richard Bennett, Philip Simpson
Standing from L to R: Tom Daniels, Doug Thrussell, Dale Christian, Dr. Abimbola Abiola, Bill Shaw, Jim Martin, Jamie Wuite, Doug Sawyer, Dug Major, Earl Graham, Paul Goranson, Tracy Scott

Upcoming events

- September 26, 2007 **Wetland Policy Consultation Workshop** Red Deer Lodge 12:00—4:00 pm. To register, or for further information, please call toll-free 1-866-420-6116
- October 18, 2007 **EPCOR Distinguished Lecture—The Economic Water Cycle** Westin Hotel, Edmonton, Alberta 6:00pm—7:00pm. For more information contact Doug Leong at 780-492-6303 or cabree@ualberta.ca
- October 28-30, 2007 **Synergy Alberta Conference: Earth, Air, Water, and Fire—The Elements of Life** Capri Hotel, Red Deer, Alberta. Attendees will have an opportunity to hear from thought-provoking and inspiring keynote speakers, as well as discuss a variety of topics within the four “elements” in smaller break-out sessions. For more information or to register visit: <http://www.synergyalberta.ca/conference/index.html>
- November 10, 2007 **Rosebud River Watershed Partners Annual Splash** Rockyford Community Centre. Join us for an evening of dining and entertainment. \$25 admission includes dinner, entertainment, annual membership to RRWP and a gift bag. For more information contact Cheryl Marshman at 403-533-2315 or Claudette Lacombe at 403-533-0008.
- November 16, 2007 **Red Deer River Watershed Alliance General Meeting: Agriculture in the Watershed:** Olds College, Olds, Alberta 10:00 am to 3:00 pm. For more information or to register contact the RDRWA at 403-340-7379.